

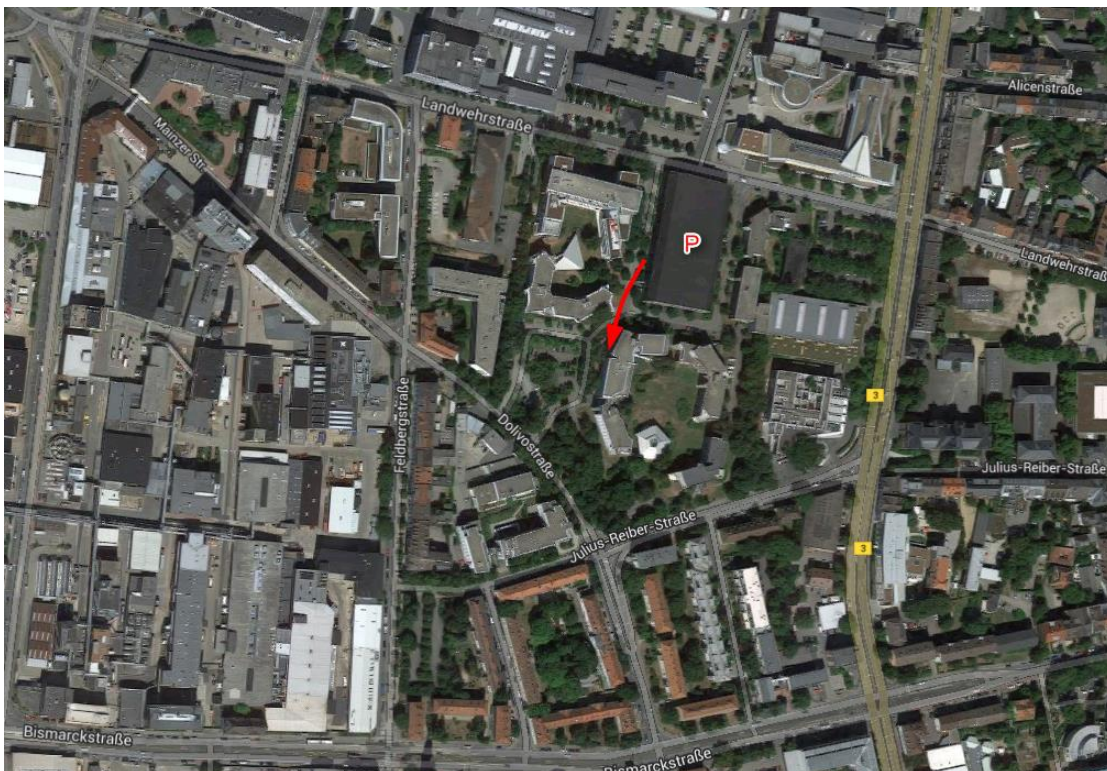
OpRisk – Location

OpRiskSolutions Intl. Ltd.
Dolivostraße 11
64293 Darmstadt

By plane: A taxi from Frankfurt/Main airport takes ~20 minutes and costs around EUR 50. You can also take the HEAG Airliner (Station 14, Terminal 1, ~EUR 7) to the stop "Maritim Konferenzhotel". From here you will need ~15 minutes by feet or a few minutes by taxi (~5 EUR).

By train: From the train station you can walk in about 15 minutes. A taxi takes only a few minutes and is about 5 EUR.

By car: You can reach Darmstadt via the freeways (Autobahnen) A5 (Frankfurt-Heidelberg-Basel) and A67 (Mainz-Wiesbaden-Mannheim). For both the exit is called "Darmstadt-Stadtmitte". You then come across the Rheinstraße (see map). Please use the multi-storey car park "Zeppelinhalle" in the Landwehrstraße (the last time we checked, parking was 2.50 € per full day).



The "P" denotes the car park in the Landwehrstraße.

The red arrow shows the way from the car park to our offices. If you exit the car park to the West and then turn left, you will be walking towards our offices. Our offices are located at the first floor.

Traveling within Darmstadt, Hotels, etc.

Our offices are located near the tram line 3, stop “Bismarckstraße”. Any hotel in the downtown area of Darmstadt should be convenient.

Some hotels within walking distance are:

Hotel Prinz Heinrich, <http://www.hotel-prinz-heinrich.de>

Hotel Ibis, Kasinostraße

Hotel Atlanta, <http://www.hotel-atlanta-darmstadt.de/>

Welcome Hotel Darmstadt:

<http://www.welcome-hotels.com/welcomehotel-darmstadt>

Maritim Rhein-Main-Hotel Darmstadt and Maritim Tagungshotel Darmstadt